




INSTRUCTIONS FOR COMPLETING THE ANSWER CARD

- do not sign the answer sheet (cards are personal);
- in the upper part of the answer card there is a field:

 Wydz.	 Nr id.	 Nr wersji testu (0-9)
---	---	--

In the above field, enter only the Test version number. Typing anything else inside the above rectangle will prevent the system from reading the card.

The version number should be entered accordingly, according to the following scheme:



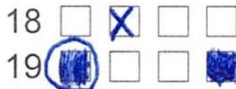
Entering the number in a different way or in a different place will cause a problem with the test.

- **ONLY** one square should be filled in for each question on the answer sheet. It is not enough to put an X - you need to fill in the whole square with a pen.

CORRECT:



INCORRECTLY:

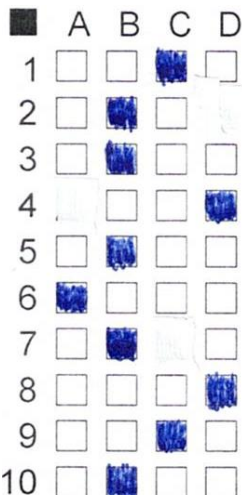


- please think about which answer is correct before you fill in the box on the answer sheet! No writing or drawing is allowed on the answer sheet! The system uses a scanner to automatically check the answer cards and does not recognize any additions, arrows, strikethroughs or comments;

- it is forbidden to circle incorrect answers in a circle, cross out and other corrections;

- the only way to correct a wrong answer is to cover it with a corrector;

Example of correctly marked answers:



Use the corrector to cover the entire square with the wrong answer. Do not draw anything in the place of the painted field;

In all questions where more than one answer was marked, something was crossed out or added on the answer sheet - the system will automatically give 0 points!

It is therefore in the interest of the student to fill out the answer sheet correctly.